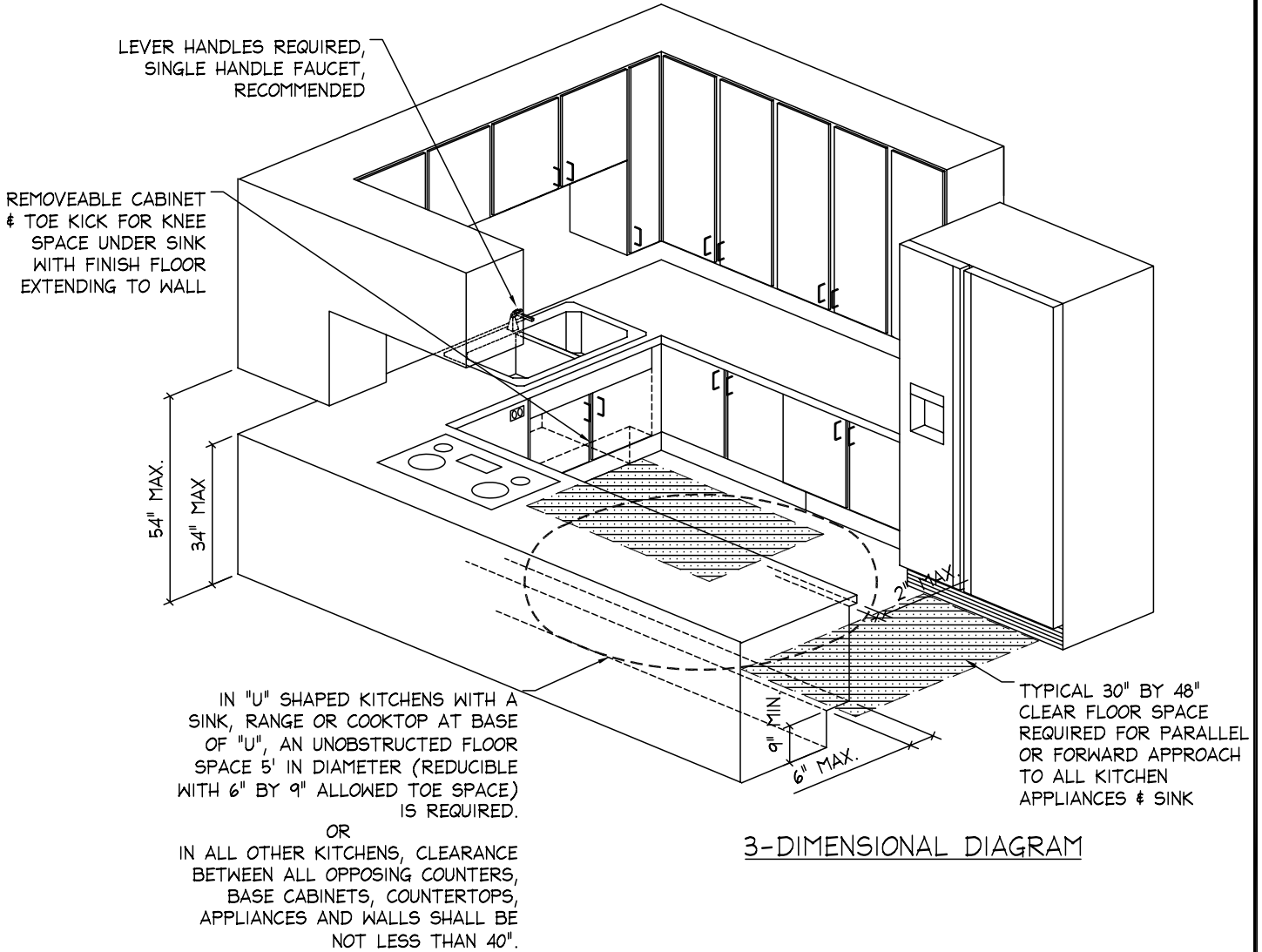


KITCHENS

ACCESSIBILITY ADAPTABLE
TYPE B UNIT

"BLUEPRINTS FOR SUCCESS"

TIP SHEET
#018
Page 1 of 1
OCTOBER 2002



WHAT IS AN ADAPTABLE DWELLING UNIT? THE WASHINGTON STATE BUILDING CODE REQUIRES THAT DWELLING UNITS BE CONFIGURED FOR ACCESSIBILITY BY PERSONS WITH DISABILITIES. THE ALLOWANCE FOR ADAPTABILITY PERMITS FLEXIBILITY FOR THOSE WHO DO NOT NEED NOR WANT CERTAIN FEATURES, WHILE PROVIDING THE POTENTIAL FOR THE SALE OR RENTAL OF ANY GIVEN UNIT TO A PERSON WITH A DISABILITY. ADAPTABLE FEATURES INCLUDE BLOCKING PROVIDED FOR THE INSTALLATION OF GRAB BARS, PARKING SIGNAGE, AND EASILY REMOVEABLE CABINETS OR SHELVING BENEATH REQUIRED WORK SPACES IN THE KITCHEN AND BENEATH BATHROOM LAVATORIES.

GENERAL INFORMATION:

1. Cabinets and shelving can be installed underneath counter space or lavatories provided that it is not permanent and easily removeable (with the use of nuts, bolts, & screws and/or without using a saw, prybar, or jackhammer.)